

US-31/M-37/M-72 (Grandview Parkway) from
Division St. (M-37) to Garfield Rd.

Project Update

City of Traverse City, Grand Traverse County

Friday - November 19, 2021



Project Limits

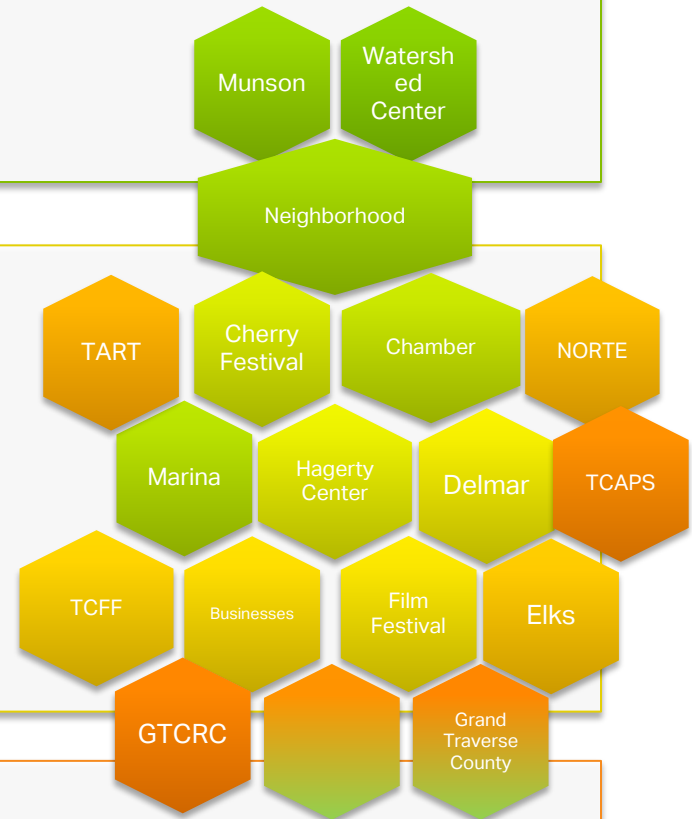


Project Team

MDOT Team

- Lucas Porath – Project Manager
- Dan Wagner – Traverse City TSC Manager
- Gary Niemi – Operations Engineer
- AECOM – Project Consultant

Project Stakeholders



City of Traverse City

- Downtown Development Authority
- City Engineering
- City Planning
- Traverse City Light and Power
- City Fire
- City Police
- Parks & Recreation

Goals of the Project

- **Safety**
 - **Stormwater Enhancements**
- **Complete Streets**
- **Connectivity Improvements**
- **Bicycling Improvements**
- **Mobility Improvements**
- **25 Year Pavement Fix**
- **Pedestrian Improvements**
- **Enhanced Downtown Access**

Project Challenges

■ Funding \$22 million

■ Right of Way



■ Standards

- MDOT
- FHWA
- City

■ Mobility

■ Design Exception for Narrow Lanes

■ Environmental

■ Schedule

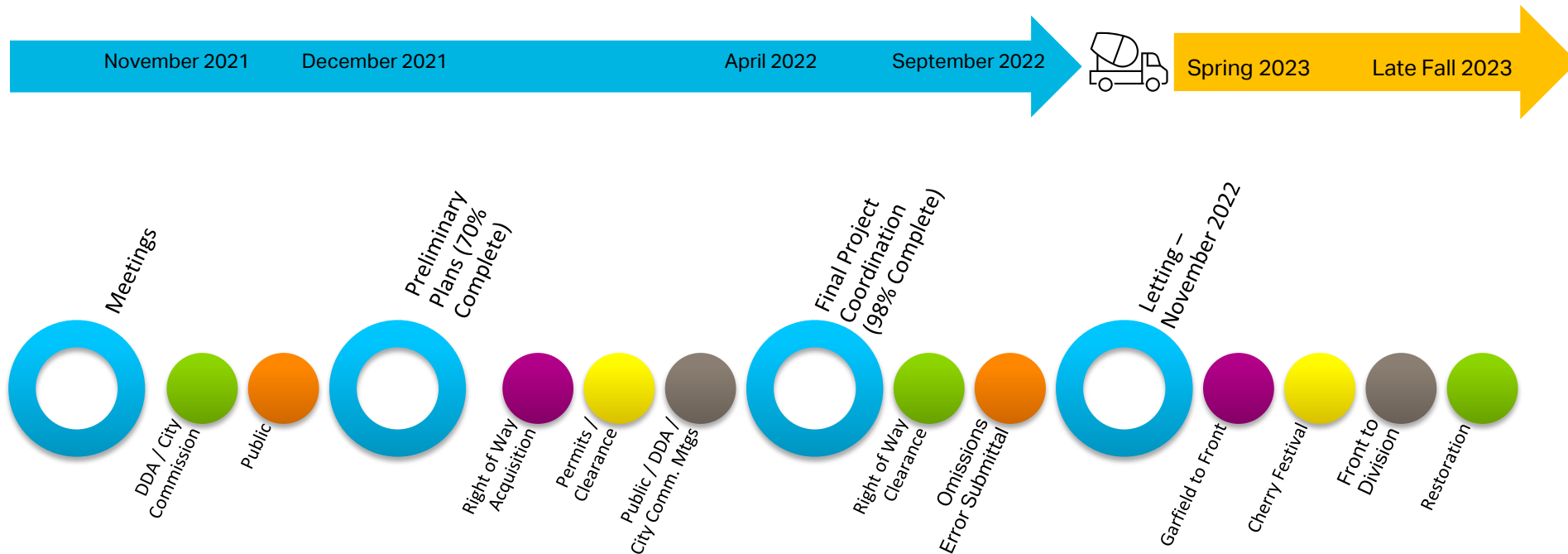
- Design
- Construction

■ Adjacent Projects

- MDOT Parkway / M-22 - 2024
- City of TC – 2022 East Front St.

• Connectivity

Project Schedule

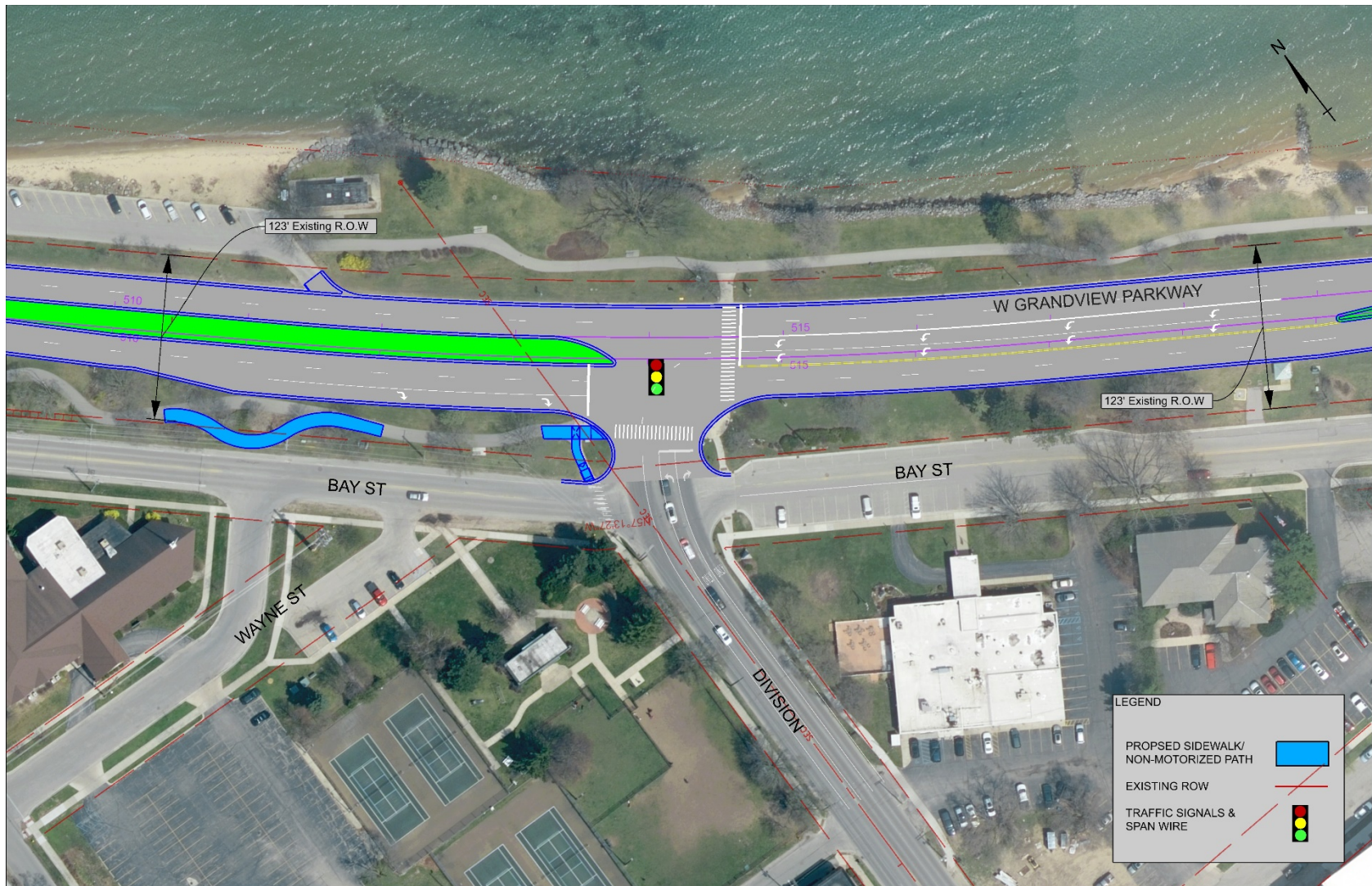


Design Details

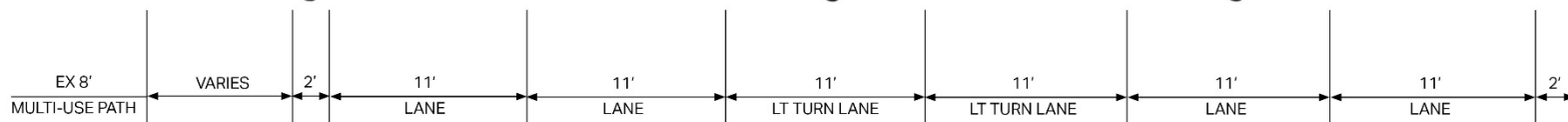
- Reconstruction Grandview Parkway from Division St. to Garfield Rd.
- Intersection Enhancements
- Murchie Bridge Rocker Replacement
- Stormwater upgrades (Quality and Flow Rates)
- City of Traverse City Water and Sanitary Sewer
- Traffic Signal Adjustments (as needed)
- Sidewalk Widening (proposed 5') and ADA Upgrades
- Enhanced Non-Motorized Pedestrian Crossings
- Signing & Pavement Markings
- Maintenance of Traffic (Pedestrians , Cyclists, and Drivers)



Reconfiguration of Grandview Parkway / Division St. (US-31/M-37) Intersection



Key Feature – Widening to 6 Lane Cross Section



Key Feature – Reconfiguration of Grandview Parkway / Hall St. (US-31/M-37) Intersection

- Options for the Median at Hall St.

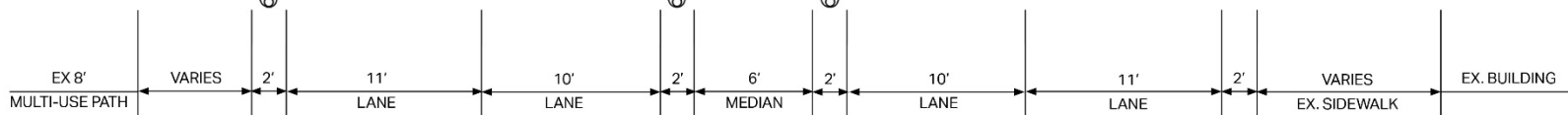


- Access Control – Volleyball Parking Lot will be right in and right out

Reconfiguration of Grandview Parkway / Hall St. Intersection



Key Feature – Widening to 5 Lane Cross-Section



Key Feature – Reconfiguration of Grandview Parkway / Front St. Intersection

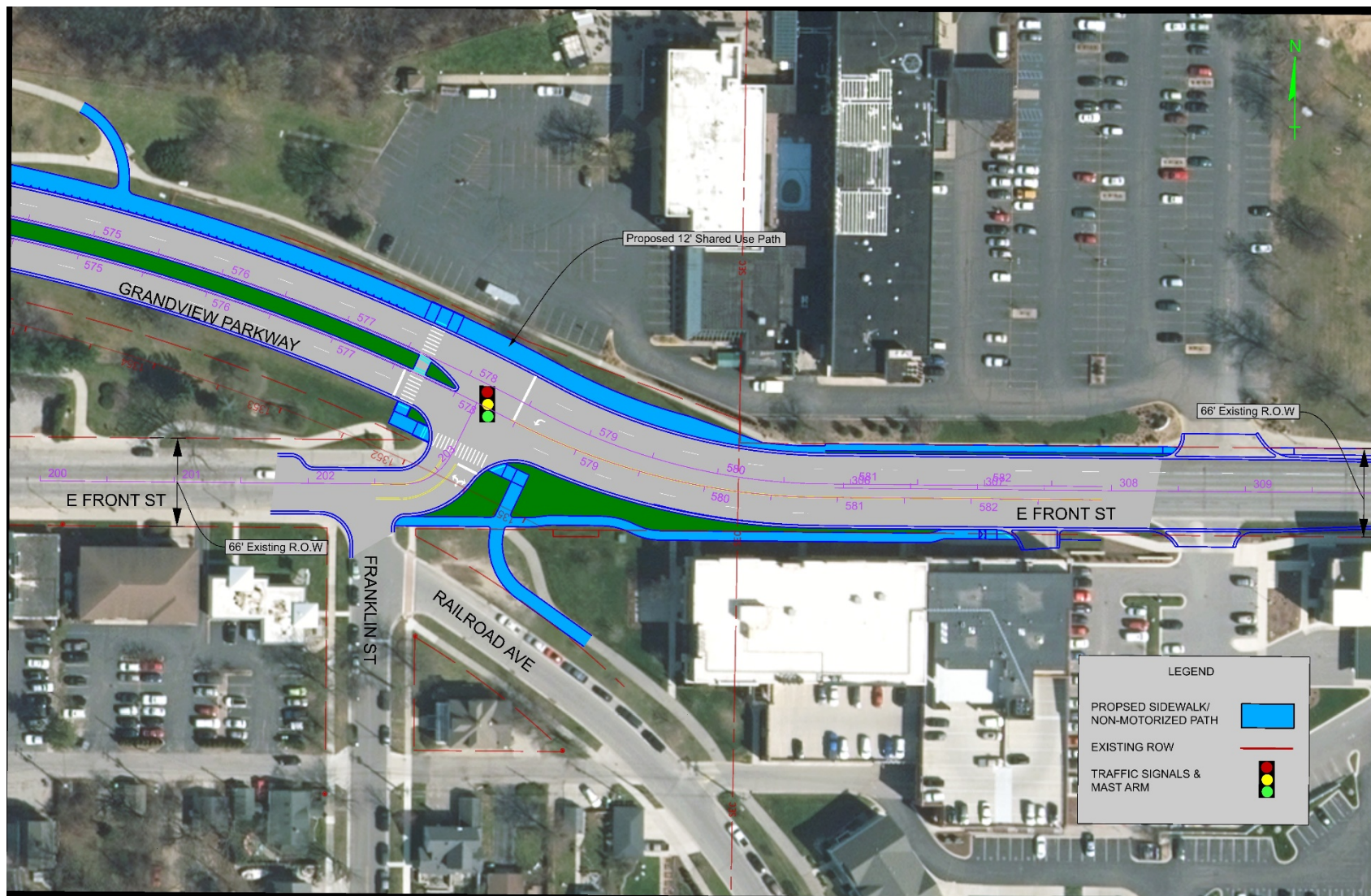


- New TART Trail Crossing
- New Pedestrian Crossing
- Existing Traffic Signal Infrastructure



- Coordination with The City of Traverse City Front St. Project

Reconfiguration of Grandview Parkway/Front St. Intersection



Key Feature – Reconfiguration of Grandview Parkway / Peninsula Dr. Intersection

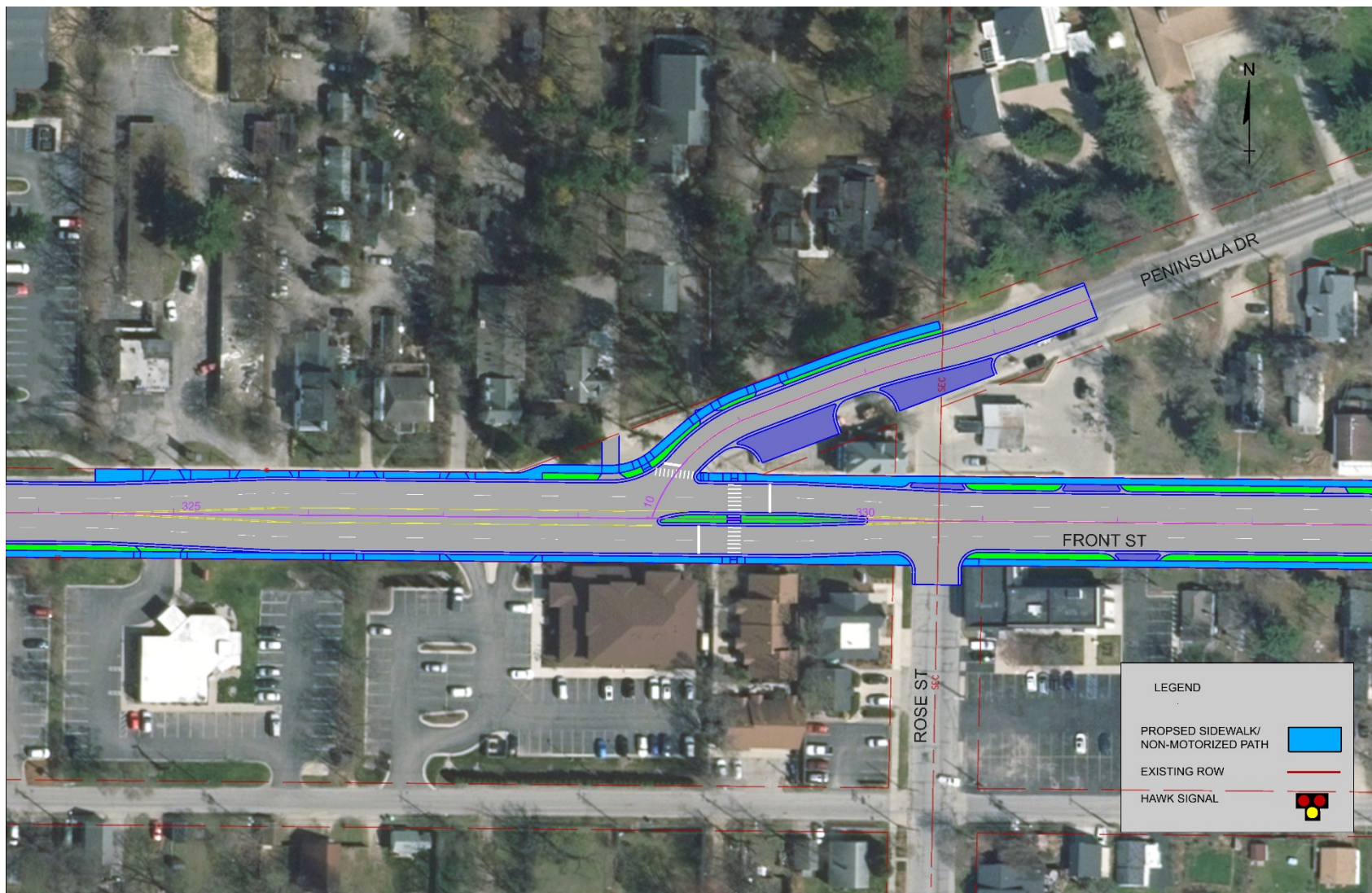


- Restricted Vehicular Traffic Movements
- Pedestrian Sidewalks and Crossings
- High Crash Location

- Proposed 10' Left Turn lane
- Proposed 10' inside lanes
- Existing ROW Constraints



Reconfiguration of Grandview Parkway/ Peninsula Dr. Intersection



Key Feature – Widening to 5 Lane Cross Section

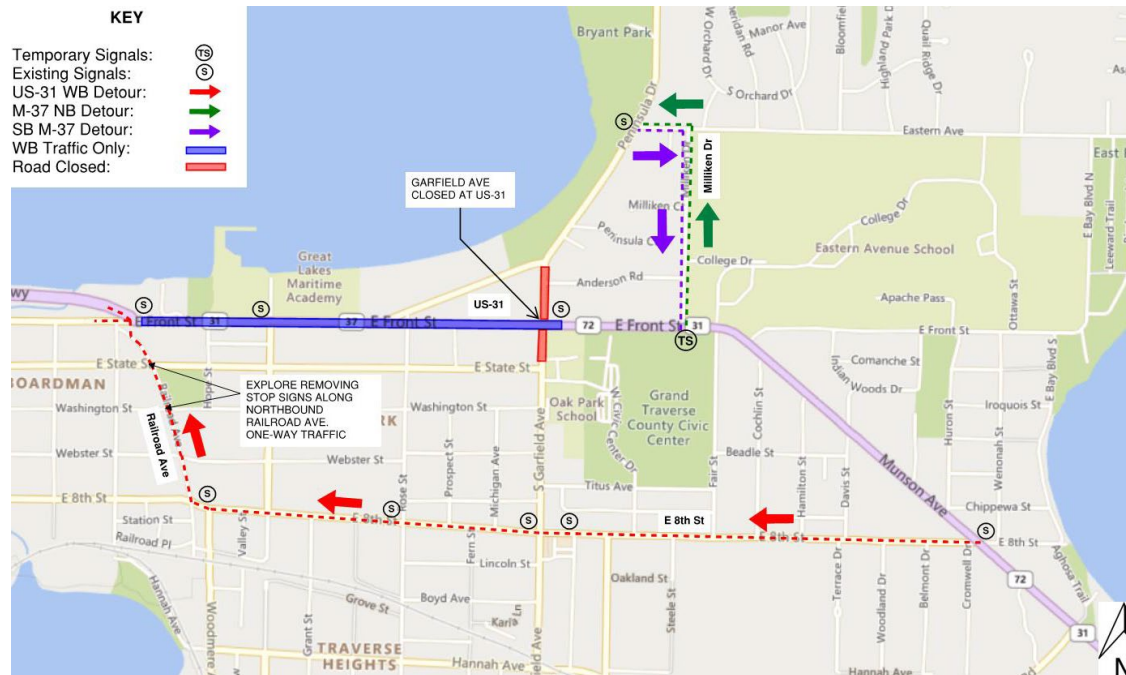


Project Staging



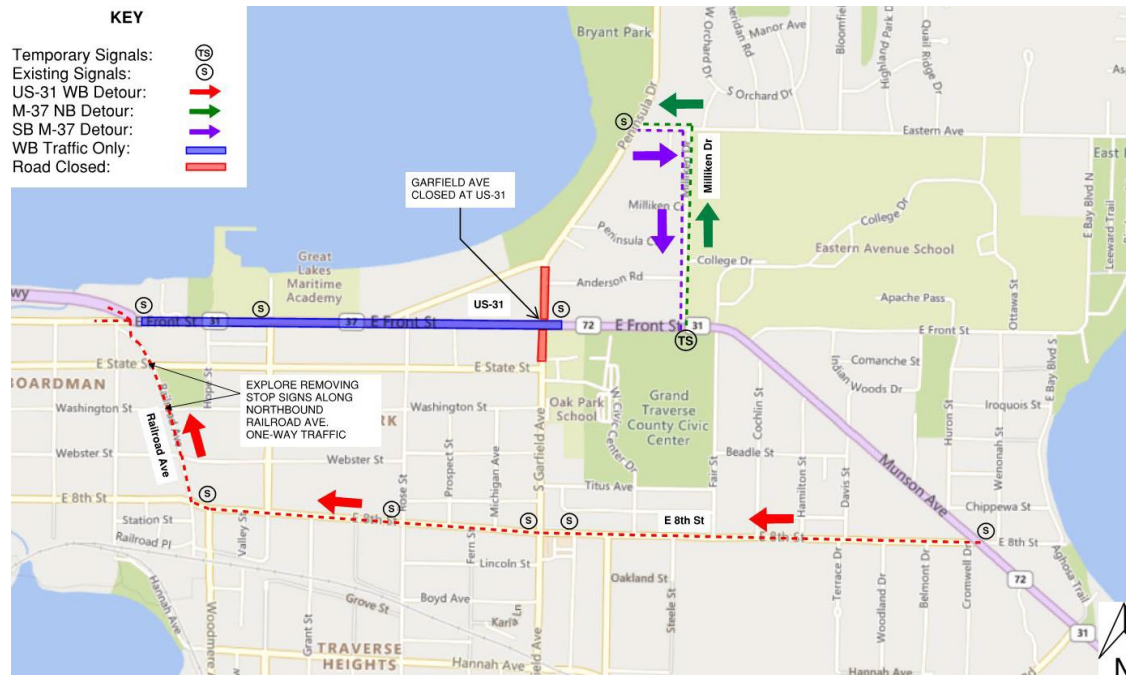
Segment 1 Detours

- Commercial Detour – S. Airport to Three Mile
- Pedestrian Detour – Use State St. to Park or Union
- Cyclists – Existing TART Trail under Murchie Bridge / State St. to Park
- Vehicular – 8th St. to Railroad

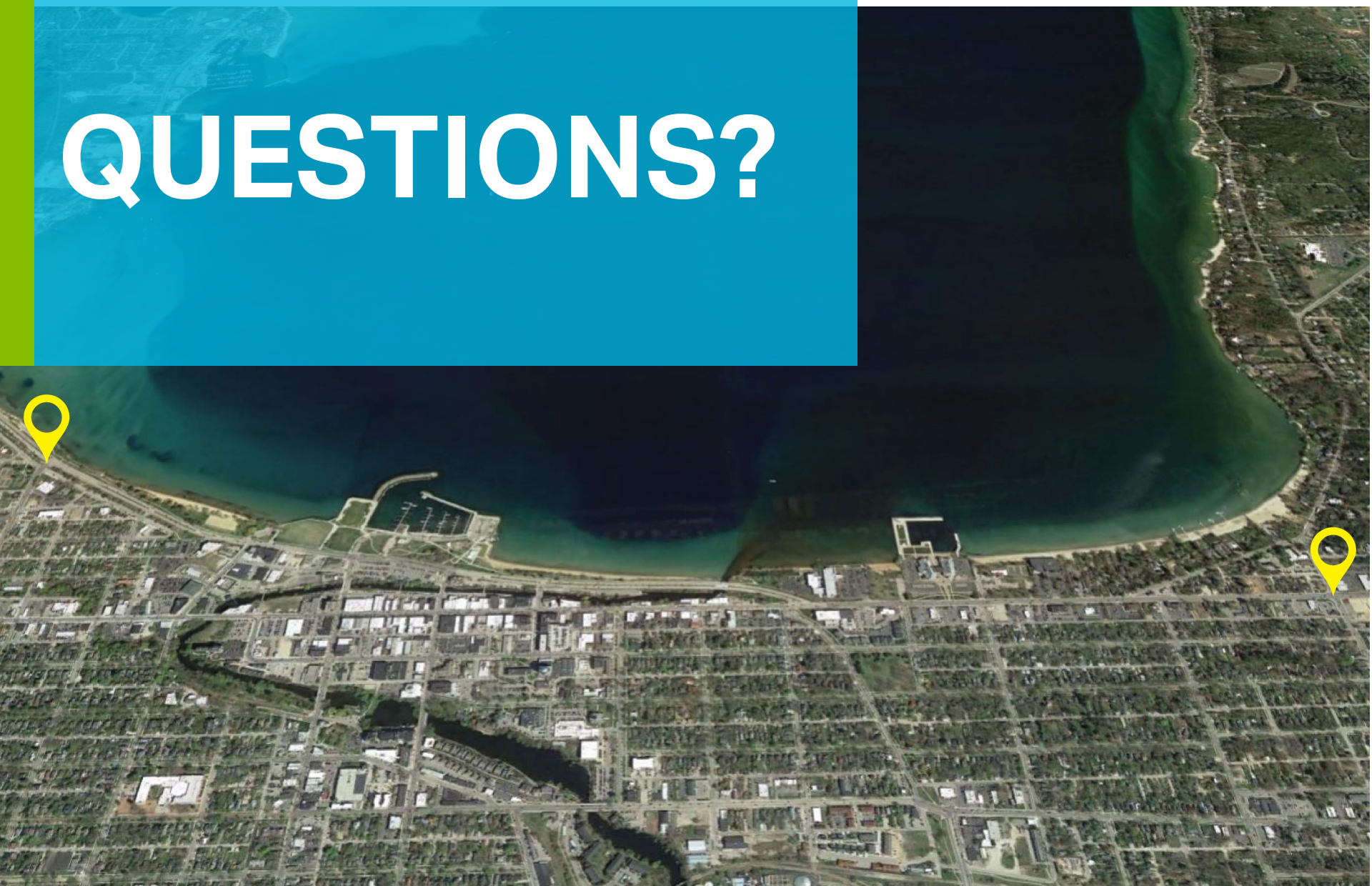


Segment 1 Detours

- Commercial Detour – S. Airport to Three Mile
- Pedestrian Detour – Use State St. to Park or Union
- Cyclists – Existing TART Trail under Murchie Bridge / State St. to Park
- Vehicular – 8th St. to Railroad



QUESTIONS?



GT Region Adaptive Traffic Signal Control Operations Project



Future Regional Projects

22-02: US-31/M-72 Holiday to Five Mile Median Construction, \$2M

22-03: M-37 Peninsula Dr to End Mill and Resurface and Ultra Thin Overlay, \$3.3M

23-01: US-31/M-72 Division to Garfield Reconstruct with Murch Bridge Rocker Replacement, \$22M

23-03: US-31 S. Airport to US-31/M-72 Mill and Resurface, \$2M

23-04: M-72 M-22 to Bugai Mill and Resurface, \$1.5M

24-01: M-72 Division to M-22 Reconstruct, \$8M

24-02: M-22 M-72 to Cherry Bend Rd Reconstruct, \$9M

25-02: US-31 10th to Front Widening for Left Turn and Median, \$3.5M

TOTAL INVESTMENT +/- \$51.3M 2022-2025

