

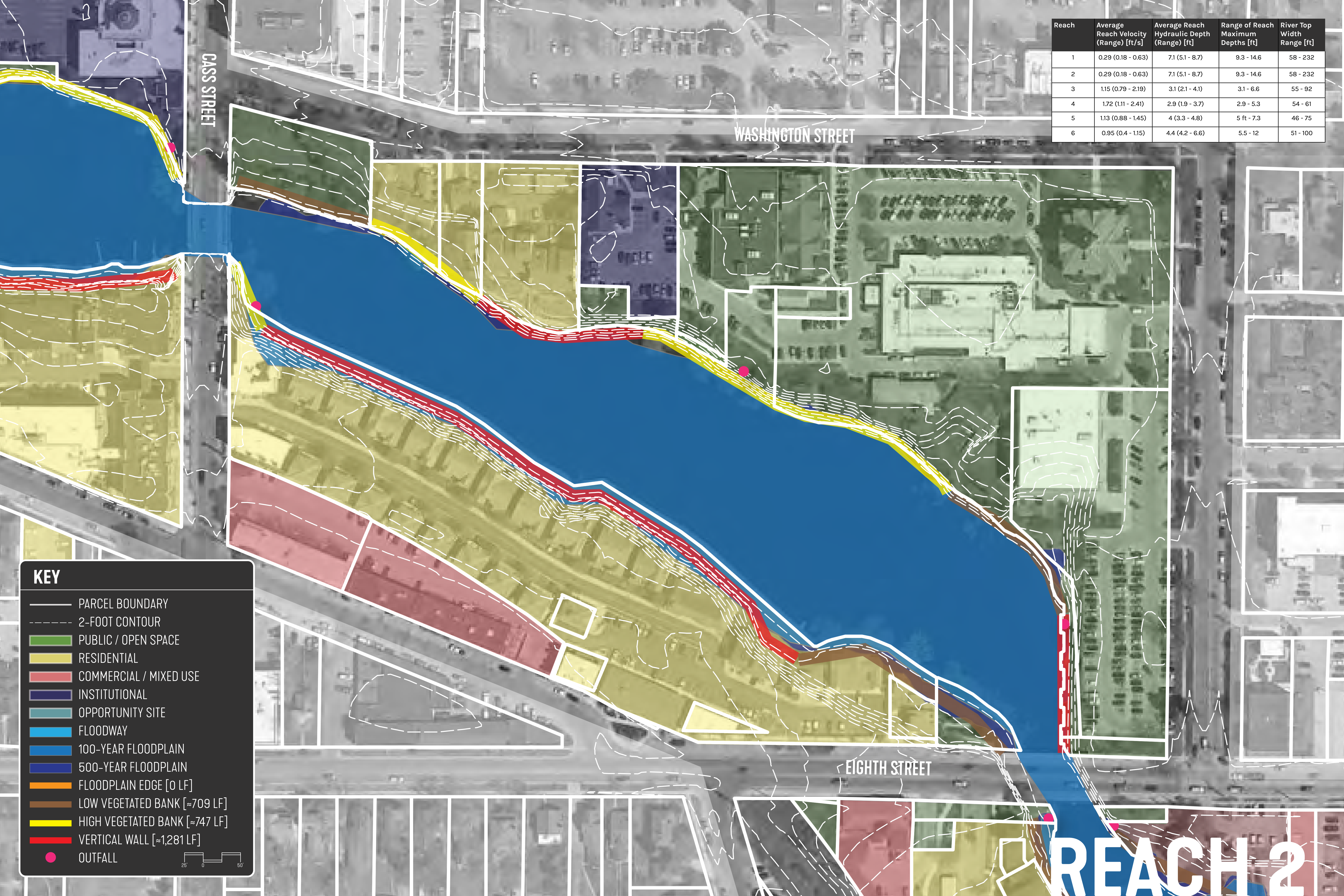
Reach	Average Reach Velocity (Range) [ft/s]	Average Reach Hydraulic Depth (Range) [ft]	Range of Reach Maximum Depths [ft]	River Top Width Range [ft]
1	0.29 (0.18 - 0.63)	7.1 (5.1 - 8.7)	9.3 - 14.6	58 - 232
2	0.29 (0.18 - 0.63)	7.1 (5.1 - 8.7)	9.3 - 14.6	58 - 232
3	1.15 (0.79 - 2.19)	3.1 (2.1 - 4.1)	3.1 - 6.6	55 - 92
4	1.72 (1.11 - 2.41)	2.9 (1.9 - 3.7)	2.9 - 5.3	54 - 61
5	1.13 (0.88 - 1.45)	4 (3.3 - 4.8)	5 ft - 7.3	46 - 75
6	0.95 (0.4 - 1.15)	4.4 (4.2 - 6.6)	5.5 - 12	51 - 100

KEY

- PARCEL BOUNDARY
- - - 2-FOOT CONTOUR
- PUBLIC / OPEN SPACE
- RESIDENTIAL
- COMMERCIAL / MIXED USE
- INSTITUTIONAL
- OPPORTUNITY SITE
- FLOODWAY
- 100-YEAR FLOODPLAIN
- 500-YEAR FLOODPLAIN
- FLOODPLAIN EDGE [0 LF]
- LOW VEGETATED BANK [≈1,709 LF]
- HIGH VEGETATED BANK [0 LF]
- VERTICAL WALL [0 LF]
- OUTFALL

REACH 1

Reach	Average Reach Velocity (Range) [ft/s]	Average Reach Hydraulic Depth (Range) [ft]	Range of Reach Maximum Depths [ft]	River Top Width Range [ft]
1	0.29 (0.18 - 0.63)	7.1 (5.1 - 8.7)	9.3 - 14.6	58 - 232
2	0.29 (0.18 - 0.63)	7.1 (5.1 - 8.7)	9.3 - 14.6	58 - 232
3	1.15 (0.79 - 2.19)	3.1 (2.1 - 4.1)	3.1 - 6.6	55 - 92
4	1.72 (1.11 - 2.41)	2.9 (1.9 - 3.7)	2.9 - 5.3	54 - 61
5	1.13 (0.88 - 1.45)	4 (3.3 - 4.8)	5 ft - 7.3	46 - 75
6	0.95 (0.4 - 1.15)	4.4 (4.2 - 6.6)	5.5 - 12	51 - 100

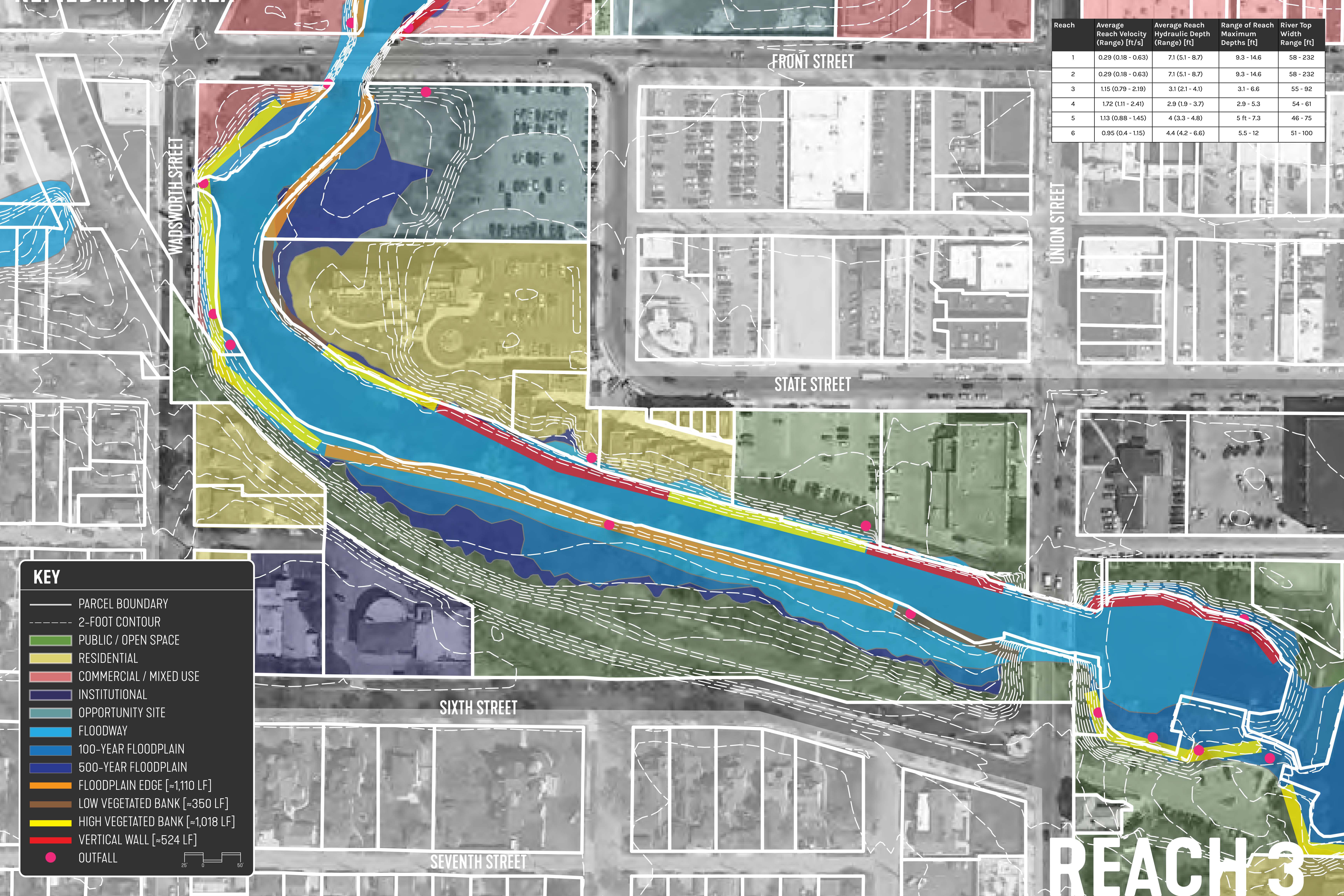


KEY

- PARCEL BOUNDARY
- - - 2-FOOT CONTOUR
- PUBLIC / OPEN SPACE
- RESIDENTIAL
- COMMERCIAL / MIXED USE
- INSTITUTIONAL
- OPPORTUNITY SITE
- FLOODWAY
- 100-YEAR FLOODPLAIN
- 500-YEAR FLOODPLAIN
- FLOODPLAIN EDGE [0 LF]
- LOW VEGETATED BANK [≈709 LF]
- HIGH VEGETATED BANK [≈747 LF]
- VERTICAL WALL [≈1,281 LF]
- OUTFALL

25' 0 50'

REACH 2



Reach	Average Reach Velocity (Range) [ft/s]	Average Reach Hydraulic Depth (Range) [ft]	Range of Reach Maximum Depths [ft]	River Top Width Range [ft]
1	0.29 (0.18 - 0.63)	7.1 (5.1 - 8.7)	9.3 - 14.6	58 - 232
2	0.29 (0.18 - 0.63)	7.1 (5.1 - 8.7)	9.3 - 14.6	58 - 232
3	1.15 (0.79 - 2.19)	3.1 (2.1 - 4.1)	3.1 - 6.6	55 - 92
4	1.72 (1.11 - 2.41)	2.9 (1.9 - 3.7)	2.9 - 5.3	54 - 61
5	1.13 (0.88 - 1.45)	4 (3.3 - 4.8)	5 ft - 7.3	46 - 75
6	0.95 (0.4 - 1.15)	4.4 (4.2 - 6.6)	5.5 - 12	51 - 100

KEY

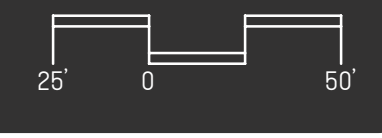
- PARCEL BOUNDARY
- - - 2-FOOT CONTOUR
- PUBLIC / OPEN SPACE
- RESIDENTIAL
- COMMERCIAL / MIXED USE
- INSTITUTIONAL
- OPPORTUNITY SITE
- FLOODWAY
- 100-YEAR FLOODPLAIN
- 500-YEAR FLOODPLAIN
- FLOODPLAIN EDGE [≈1,110 LF]
- LOW VEGETATED BANK [≈350 LF]
- HIGH VEGETATED BANK [≈1,018 LF]
- VERTICAL WALL [≈524 LF]
- OUTFALL

25' 0 50'

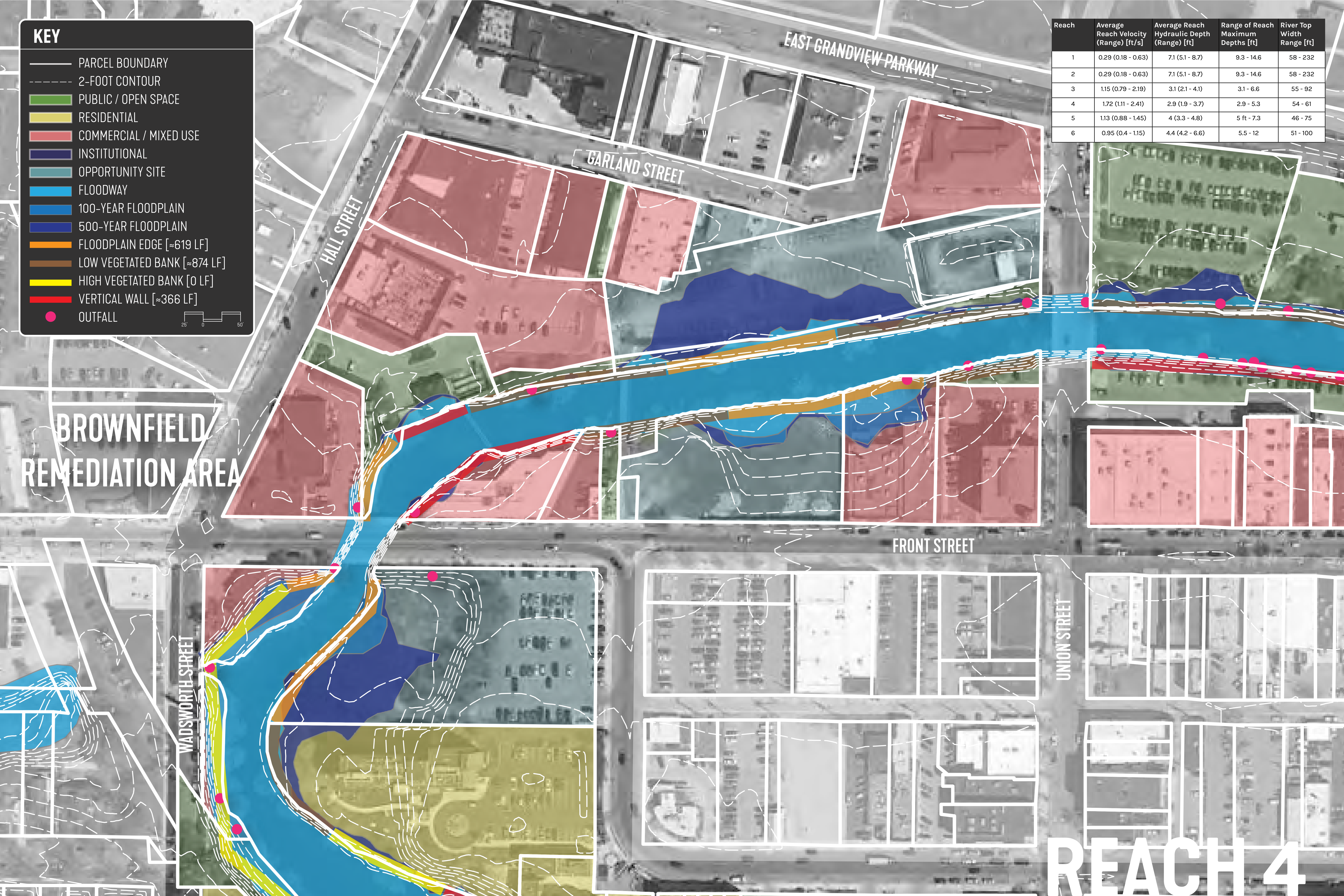
REACH 3

KEY

- PARCEL BOUNDARY
- - - 2-FOOT CONTOUR
- PUBLIC / OPEN SPACE
- RESIDENTIAL
- COMMERCIAL / MIXED USE
- INSTITUTIONAL
- OPPORTUNITY SITE
- FLOODWAY
- 100-YEAR FLOODPLAIN
- 500-YEAR FLOODPLAIN
- FLOODPLAIN EDGE [≈619 LF]
- LOW VEGETATED BANK [≈874 LF]
- HIGH VEGETATED BANK [0 LF]
- VERTICAL WALL [≈366 LF]
- OUTFALL



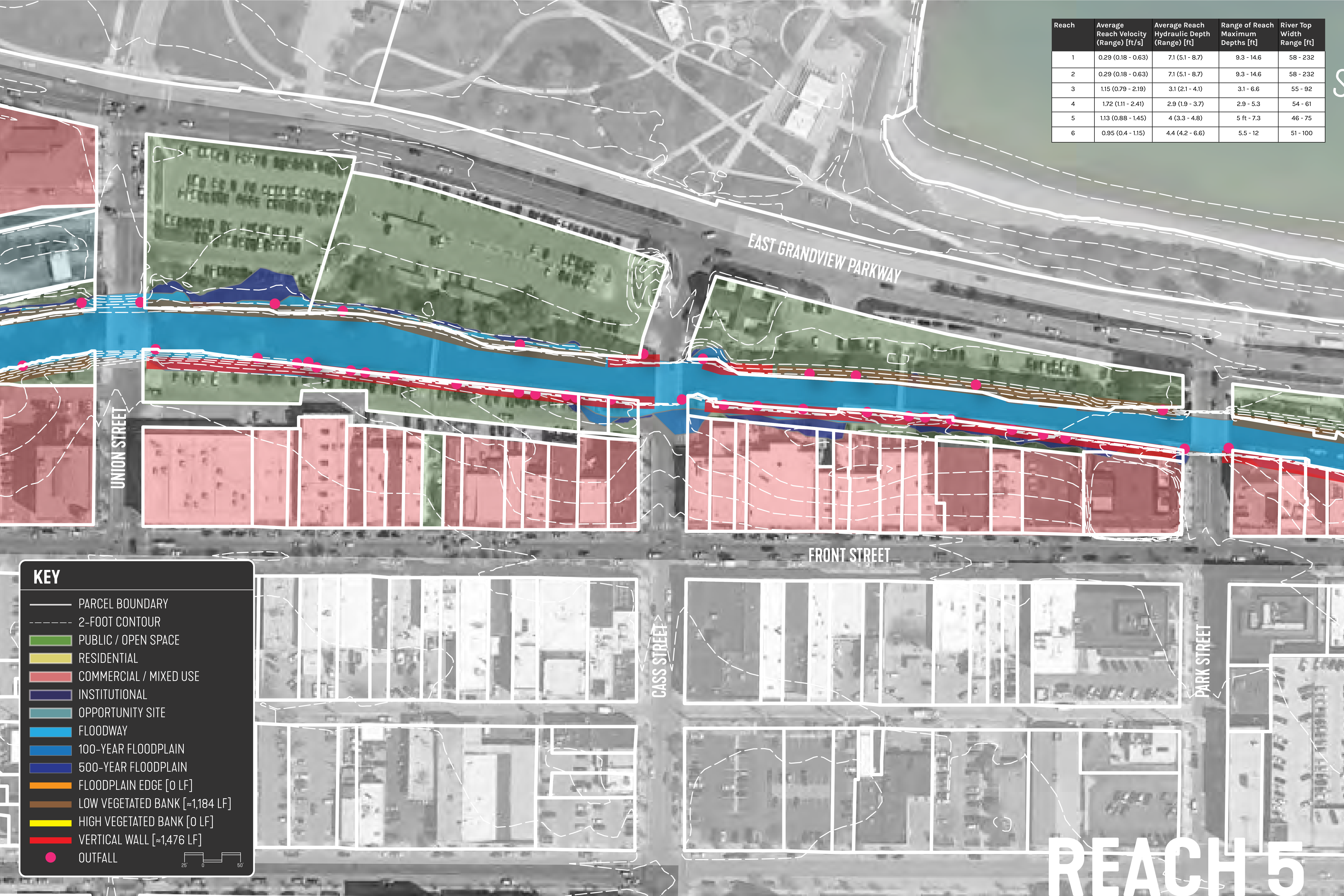
**BROWNFIELD
REMEDIATION AREA**



Reach	Average Reach Velocity (Range) [ft/s]	Average Reach Hydraulic Depth (Range) [ft]	Range of Reach Maximum Depths [ft]	River Top Width Range [ft]
1	0.29 (0.18 - 0.63)	7.1 (5.1 - 8.7)	9.3 - 14.6	58 - 232
2	0.29 (0.18 - 0.63)	7.1 (5.1 - 8.7)	9.3 - 14.6	58 - 232
3	1.15 (0.79 - 2.19)	3.1 (2.1 - 4.1)	3.1 - 6.6	55 - 92
4	1.72 (1.11 - 2.41)	2.9 (1.9 - 3.7)	2.9 - 5.3	54 - 61
5	1.13 (0.88 - 1.45)	4 (3.3 - 4.8)	5 ft - 7.3	46 - 75
6	0.95 (0.4 - 1.15)	4.4 (4.2 - 6.6)	5.5 - 12	51 - 100

REACH 4

Reach	Average Reach Velocity (Range) [ft/s]	Average Reach Hydraulic Depth (Range) [ft]	Range of Reach Maximum Depths [ft]	River Top Width Range [ft]
1	0.29 (0.18 - 0.63)	7.1 (5.1 - 8.7)	9.3 - 14.6	58 - 232
2	0.29 (0.18 - 0.63)	7.1 (5.1 - 8.7)	9.3 - 14.6	58 - 232
3	1.15 (0.79 - 2.19)	3.1 (2.1 - 4.1)	3.1 - 6.6	55 - 92
4	1.72 (1.11 - 2.41)	2.9 (1.9 - 3.7)	2.9 - 5.3	54 - 61
5	1.13 (0.88 - 1.45)	4 (3.3 - 4.8)	5 ft - 7.3	46 - 75
6	0.95 (0.4 - 1.15)	4.4 (4.2 - 6.6)	5.5 - 12	51 - 100



KEY

- PARCEL BOUNDARY
- - - 2-FOOT CONTOUR
- PUBLIC / OPEN SPACE
- RESIDENTIAL
- COMMERCIAL / MIXED USE
- INSTITUTIONAL
- OPPORTUNITY SITE
- FLOODWAY
- 100-YEAR FLOODPLAIN
- 500-YEAR FLOODPLAIN
- FLOODPLAIN EDGE [0 LF]
- LOW VEGETATED BANK [≈1,184 LF]
- HIGH VEGETATED BANK [0 LF]
- VERTICAL WALL [≈1,476 LF]
- OUTFALL

25' 0 50'

REACH 5

WEST ARM GRAND TRAVERSE BAY

Reach	Average Reach Velocity (Range) [ft/s]	Average Reach Hydraulic Depth (Range) [ft]	Range of Reach Maximum Depths [ft]	River Top Width Range [ft]
1	0.29 (0.18 - 0.63)	7.1 (5.1 - 8.7)	9.3 - 14.6	58 - 232
2	0.29 (0.18 - 0.63)	7.1 (5.1 - 8.7)	9.3 - 14.6	58 - 232
3	1.15 (0.79 - 2.19)	3.1 (2.1 - 4.1)	3.1 - 6.6	55 - 92
4	1.72 (1.11 - 2.41)	2.9 (1.9 - 3.7)	2.9 - 5.3	54 - 61
5	1.13 (0.88 - 1.45)	4 (3.3 - 4.8)	5 ft - 7.3	46 - 75
6	0.95 (0.4 - 1.15)	4.4 (4.2 - 6.6)	5.5 - 12	51 - 100



KEY

- PARCEL BOUNDARY
- - - 2-FOOT CONTOUR
- PUBLIC / OPEN SPACE
- RESIDENTIAL
- COMMERCIAL / MIXED USE
- INSTITUTIONAL
- OPPORTUNITY SITE
- FLOODWAY
- 100-YEAR FLOODPLAIN
- 500-YEAR FLOODPLAIN
- FLOODPLAIN EDGE [0 LF]
- LOW VEGETATED BANK [≈963 LF]
- HIGH VEGETATED BANK [≈279 LF]
- VERTICAL WALL [≈1,853 LF]
- OUTFALL

25' 0 50'

REACH 6